

ELA
CREATIVE

ELA
CREATIVE

ELA
CREATIVE

ELA
CREATIVE

ELA
CREATIVE

ELA
CREATIVE

ELA
CREATIVE

ELA
CREATIVE

ELA
CREATIVE

ELA
CREATIVE

ELA
CREATIVE

ELA
CREATIVE

ELA
CREATIVE

ELA
CREATIVE

ELA
CREATIVE

ELA
CREATIVE

ELA
CREATIVE

ELA
CREATIVE

ELA
CREATIVE

SHOOTING GUIDELINE

On-model shooting for **“CATALOGUE | Express”** package
Guidelines: angles and frames

ELA
CREATIVE

ELA
CREATIVE

ELA
CREATIVE

ELA
CREATIVE

ELA
CREATIVE

ELA
CREATIVE

ELA
CREATIVE

ELA
CREATIVE

ELA
CREATIVE

ELA
CREATIVE

ELA
CREATIVE

ELA
CREATIVE

ELA
CREATIVE

ELA
CREATIVE

ELA
CREATIVE

ELA
CREATIVE

ELA
CREATIVE

ELA
CREATIVE

ELA
CREATIVE

ELA
CREATIVE

ELA
CREATIVE

ELA
CREATIVE

ELA
CREATIVE

ELA
CREATIVE

ELA
CREATIVE

ELA
CREATIVE

ELA
CREATIVE

ELA
CREATIVE

ELA
CREATIVE

ELA
CREATIVE

ELA
CREATIVE

ELA
CREATIVE

ELA
CREATIVE



ELA
CREATIVE

ELA
CREATIVE

ELA
CREATIVE

ELA
CREATIVE

ELA
CREATIVE

ELA
CREATIVE

ELA
CREATIVE

ELA
CREATIVE

ELA
CREATIVE

ELA
CREATIVE

ELA
CREATIVE

ELA
CREATIVE

ELA
CREATIVE

ELA
CREATIVE

ELA
CREATIVE

ELA
CREATIVE

ELA
CREATIVE

ELA
CREATIVE

ELA
CREATIVE

ELA
CREATIVE

ELA
CREATIVE

ELA
CREATIVE

ELA
CREATIVE

ELA
CREATIVE

ELA
CREATIVE

ELA
CREATIVE

ELA
CREATIVE

ELA
CREATIVE

ELA
CREATIVE

ELA
CREATIVE

1. **TOP**

1.1. t-shirts, crop tops, shirts, blouses, hoodies, jackets, etc.

2. **BOTTOM**

2.1. jeans, trousers, shorts, skirts

3. **COMBI**

3.1. dresses, suits, jumpsuits, as well as knee-length T-shirts, tunics, cardigans

3.2. bathrobes, pajamas, nightgowns, peignoirs, shorts, as well as house pants

4. **UNDERWEAR AND SWIMWEAR**

4.1. One-piece swimsuits

4.2. Bras, as well as lingerie short tops

4.3. Panties

4.4. Underwear and trunks (for men)

TOP (4 images)

T-shirts, crop tops, shirts, blouses, hoodies, jackets, etc.

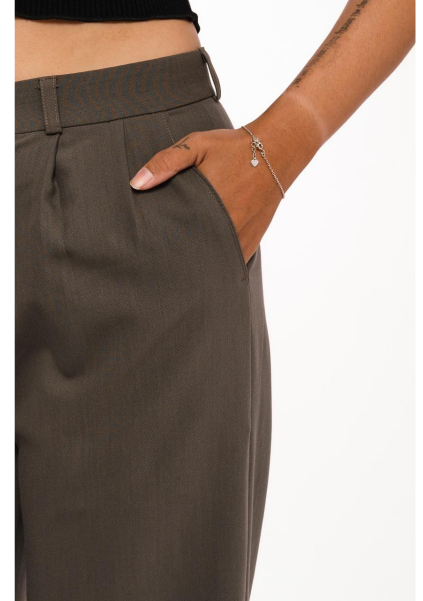
Photographs are taken up to the knee (the first 2 frames), the third frame from the chin to the wrist (detail), the fourth a larger detail or a distinctive element of the product



BOTTOM (4 images)

Jeans, trousers, shorts, skirts

Photographs are taken in full length, the third frame is a detail, the fourth is a larger detail or a distinctive element of the product



COMBI (4 images)

A - Dresses, suits, jumpsuits, as well as knee-length T-shirts, tunics, cardigans

Photographs are taken at full height (the first 2 frames), the third frame from the chin to the wrist (detail), the fourth a larger detail or a distinctive element of the product



COMBI (2 images)

B - Bathrobes, pajamas, nightgowns, peignoirs, shorts, as well as house pants

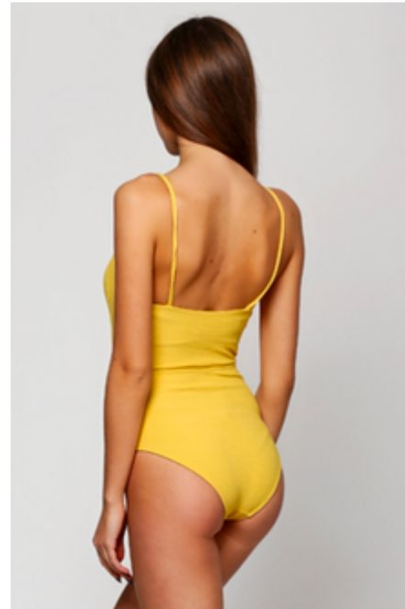
Photographs are taken in full-length barefoot; optional - from the chin to the wrist (detail), and a larger detail or a distinctive element of the product



UNDERWEAR AND SWIMWEAR (2 images)

A - One-piece swimsuits

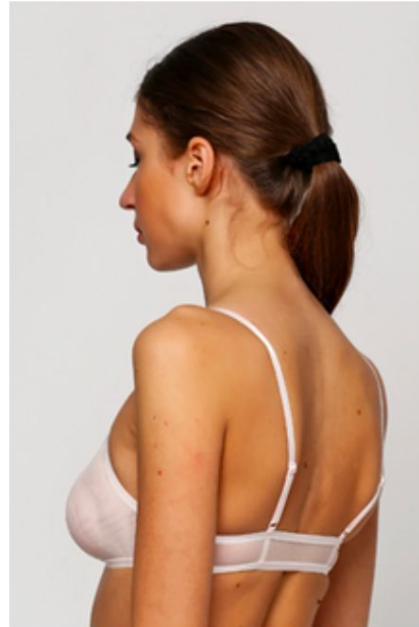
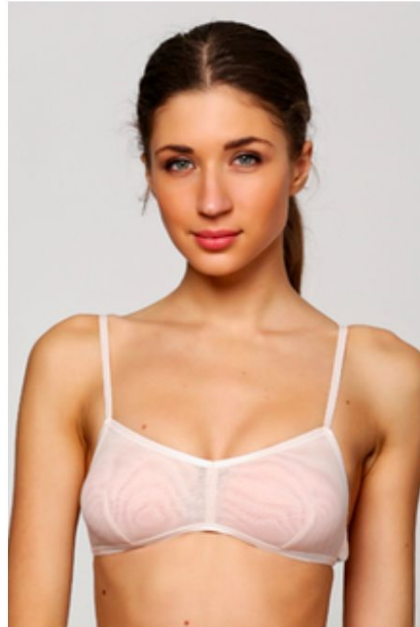
photographed up to the knee



UNDERWEAR AND SWIMWEAR (2 images)

B - Bras, as well as lingerie short tops

photographed up to the waist



UNDERWEAR AND SWIMWEAR (2 images)

C - Panties

photographed from the navel to the knee



UNDERWEAR AND SWIMWEAR (2 images)

D - Underwear and trunks (for men)

photographed in full height

